

the new Industry Standard

for your PPM

White Paper



May 2011

Contents

	Page
Executive Summary	3
About IT-ROI	3
Introduction	4
IT-ROI's Software Solutions Offering	5
Integration Bridge (IB3)	5
PPM Excel Interface	6
PPM Excel Interface (continued)	7
Four Component Solution	8
Conclusion	9
Contact	9

Executive Summary

IT-ROI has developed new software tools that will revolutionize the way companies and governments use CA Clarity -- tools that challenge the status quo and redefine the industry standard when it comes to integration costs and integration downtime. We are proud to introduce never before seen marketplace versatility when it comes to implementation, integration, migration and ease of user adoption tools for CA Clarity.

The two product offerings profiled in this White Paper are: **Integration Bridge (IB3)**; and, the accompanying **PPM Excel Interface** (accessible as both a stand-alone software product or combined as a plug-in for our existing IB3 clients).

IB3 gives you the power, for the first time, to begin thinking of multiple integrations across your organization in the time it used to take to accomplish a single one. Gone are the days of creating one-off integrations and waiting on the availability of expensive and hard-to-find IT consultants.

Our **PPM Excel Interface** software tool gives clients the power to extract all data in Clarity directly into an Excel document and in the process reach new and previously unheard of levels of productivity with the click of a button. Gone are the days of limitations to what data can be extracted, modified or updated all thanks to its unique ability to extract all data directly into Excel from Clarity.

About IT-ROI

IT-ROI is a software development company and PPM systems integration provider with offices in Miami and Vancouver. Our exposure to both the North and South American market strengthens our position and access to key customers. Our geographically diverse workforce can provide client services in English, Spanish, and French, helping to better position our company in addressing the demands for CA Clarity PPM deployment and implementation. IT-ROI also provides technical consulting services to Tier One enterprises and is a Certified CA technologies partner. Founded in 2009, we have been profitable since our inception. This year will be no exception as we continue our aggressive growth strategy and expand our product line.

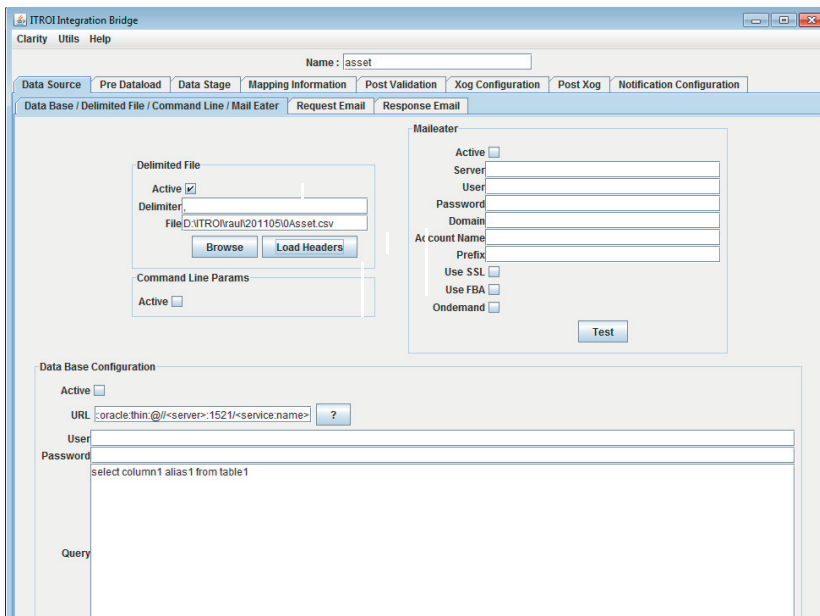
Introduction

The implementation costs associated with interfacing CA Clarity PPM with outside data are significant, and the historical track record of cost containment on these highly complex large scale projects has been less than stellar in both the public and private sectors.

Businesses thrive by investing their precious IT resources in areas that create the greatest return on investment. One of the greatest challenges facing both Fortune 500 companies and Government departments worldwide is containing escalating costs associated with their data interfacing requirements.

Clients can face obstacles in a number of deliverable areas, including:

Projects	Rate Matrix
Resources	Ideas
Users	Assets
Project Team	Services
Risks, Issues, Change	Incidents
Requests	Applications
Cost and Budget Plans	Programs



Assisting our clients overcome these obstacles and successfully execute projects, at a fraction of the cost and in the fraction of the time, allows them to drive up their growth and innovation.

In the process, Fortune 500 companies and Government departments can achieve never before imagined cost savings for their shareholders and tax payers respectively.

IT-ROI's Software Solutions Offering

Our client relationship philosophy is premised on creating win-win partnerships where we work closely with you on the rapid deployment of our software offerings to optimize your success.

Integration Bridge

Our new Integration Bridge (IB3) software has led to a paradigm shift where companies can, for the first time, begin thinking of multiple integrations across their organization in the time it used to take to accomplish a single one. Gone are the days of creating one-off integrations and waiting on the availability of expensive and hard-to-find IT consultants.

The versatility of IB3 breaks down the old barrier of market-specific product iterations by creating a software solution that meets the diversity of needs from the financial services, energy, insurance, healthcare, and high tech industries, to local, regional and national governments.

Clarity PPM Integration	Hours Required	
	Current Industry Standard	IB3 New Industry Standard
Task		
Gather Business Requirements	8	8
Query Data Source	8	8
Map Source to WSDL	24	2
Nested Tags/Batching/MultiThreading	72	0
Error Handling/Reporting	40	0
Notifications	16	0
Custom Business Logic/Validation	40	8
Testing	40	0
Deployment	8	0
Support (yearly)	40	0
Total Hours	296	26

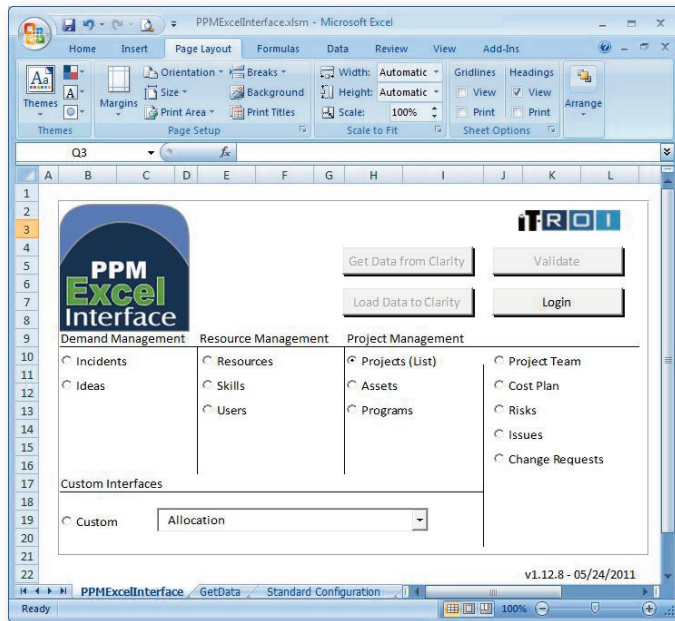
IT-ROI successfully completed delivery of its new IB3 software suite with several large Tier One clients and the user reviews are stellar. Our software allows you to focus on what really matters instead of worrying about the uncertainties of how long and how much will it take to complete an integration or migration.

The IB3 eliminates the need to hire expensive consultants that will spend months writing custom GEL/XOG scripts for Clarity to pull in data on a regular basis. It also eliminates the traditional XOG background (BG) engine bog downs on Clarity servers by introducing innovative efficiencies that increase productivity levels solving the processing bottle-neck and the need to waste time developing work arounds.

PPM Excel Interface



The PPM Excel Interface, is our second new product line offering and is accessible to customers as both a stand-alone software product or can be combined as a plug-in for our existing IB3 clients.



This tool dramatically boosts a company's ability to managing multiple CA Clarity projects with never before seen versatility and functionality for data integration via Microsoft Excel. The versatility of the PPM Excel Interface enables users to extract all data in Clarity directly into an Excel document, thus allowing editing and re-submitting of all the data inclusive of edits back into Clarity -- with the click of a single button.

Additional Features Include:

- Automatic data validation (avoid bad data load problems) for lookups, date fields, booleans, numerics. Validation directly against lookups in Clarity
- Extract from Clarity into Excel, update in Excel and upload to Clarity
- Fast reliable updates
- Fully auditable via staging tables, logs
- Built in reporting for data loads (automatically generate NSQL Portlets of data loads)
- Built in data validation
- Completely configurable interface for Clarity
- No limit to what can be loaded/retrieved via interface

Continued

PPM Excel Interface *(continued)*

Our PPM Excel Interface provides an out of the box functionality that can be used immediately in order to extract and edit data from Clarity. However, clients who have a high degree of Clarity customization requirements may have additional objects that need to be included. For this, IT-ROI provides a method of creating a custom query in Clarity that the PPM Excel Interface can use to obtain data. This custom query can extract the required data from Clarity, including data from a custom object.

The PPM Excel Interface uses the IT-ROI IB3 to obtain data and send data to Clarity. The IB is a very powerful stand-alone tool that is used to create integrations to/from Clarity via XOG between Clarity and other enterprise applications. By integrating the IB directly into the PPM Excel Interface tool, customers are able to take advantage of 100% automated XOG functionality that the IB provides. With a simple click of a button in Excel, an entire XOG operation is launched to obtain or send data to/from Clarity.

Four Component Solution

Inbound
Integrations

Outbound
Integrations

Migrations

PPM Excel
Interface

Inbound Integrations

- No need for custom GEL scripts or XOG. work
- Built in data validation
- Validates against Clarity Schema
- Configurable batching that allows to batch multiple messages into one, improving performance
- Multi Threading allowing large data loads by sending multiple threads of WSDL calls at once
- Built in error handling
- Built in reports (for status of integrations)
- Built in email notifications
- Data source configuration (Query, delimited file)
- Built in Mail-Eater for data source (Integrations can be sent via email)

Migrations

The IB allows end users to migrate any part or all of their Clarity environment from one system to another by clicking a button. With a pre-packaged set of migration executables, clients can selectively choose any part of an environment that they would like to migrate with a simple click of a button. There is no need for command line XOG's or manually modifying XML files.

Outbound Integrations

- Automatically detect available outbound integration from server, and allow user to select integration type
- Automatically detect available filters for outbound Integrations and allows users to select one or multiple filters
- Configurable (using Clarity UI) data extractions from clarity
- No need for database connectivity (excellent option for data extraction for On Demand Customers)
- Integrated Clarity Security into data pulls (can only see what you have permission to see)
- Extract Data to Any format (Delimited File, XML, or Database)
- Built in scheduling tool to schedule data pulls

PPM Excel Interface

- Automatic data validation (avoid bad data load problems) for lookups, date fields, booleans, numerics. Validation directly against lookups in Clarity
- Extract from Clarity into Excel, update in Excel and upload to Clarity
- Fast reliable updates
- Fully auditable via staging tables, logs
- Built in reporting for data loads (automatically generate NSQL Portlets of data loads)
- Built in Data validation
- Completely configurable interface for Clarity. No limit to what can be loaded/retrieved via interface



Conclusion

Thank you for taking the time to learn about our product offerings. We appreciate your interest. Confidence is a virtue that successful businesses bestow into their marketplace. Our focus on utilizing new technologies to enhance the usability and productivity of your current PPM will greatly enhance your confidence when using Clarity.

We welcome the opportunity to prepare a Proof of Concept (POC) for any of the integration challenges you currently face. We are confident that our IB3 and PPM Excel Interface software solutions can deliver results you never dreamed possible.

Contact

Federico Pena

President

Mobile: 954.616.7157

Mail: fpena@itroisolutions.comOffices

USA: 954.518.3330 ext.102

Canada: 604.998.2280 ext.102

South America: +(571) 508.7510 ext.102

www.itroisolutions.com